

CONVEYORS WITH STANDARD HOPPERS STANDARD HOPPER FLASHING PLACEMENT

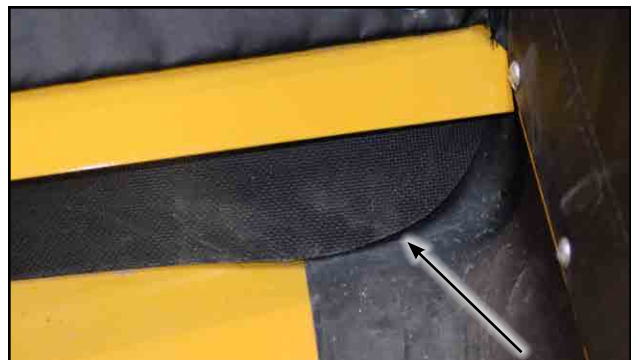
This is an image of our standard conveyor hopper before the belt is threaded.



1. Install the Hopper Tail Flashing onto the front of the hopper, first.



2. The Hopper Side Flashing must be placed over top the Tail Flashing.



3. When the conveyor belt is threaded through the tube and hopper, be sure to pull it underneath the Side and Tail Flashing.



IMPORTANT:

The hopper flashing must sit on top of the conveyor belt, to work correctly sealing the hopper.